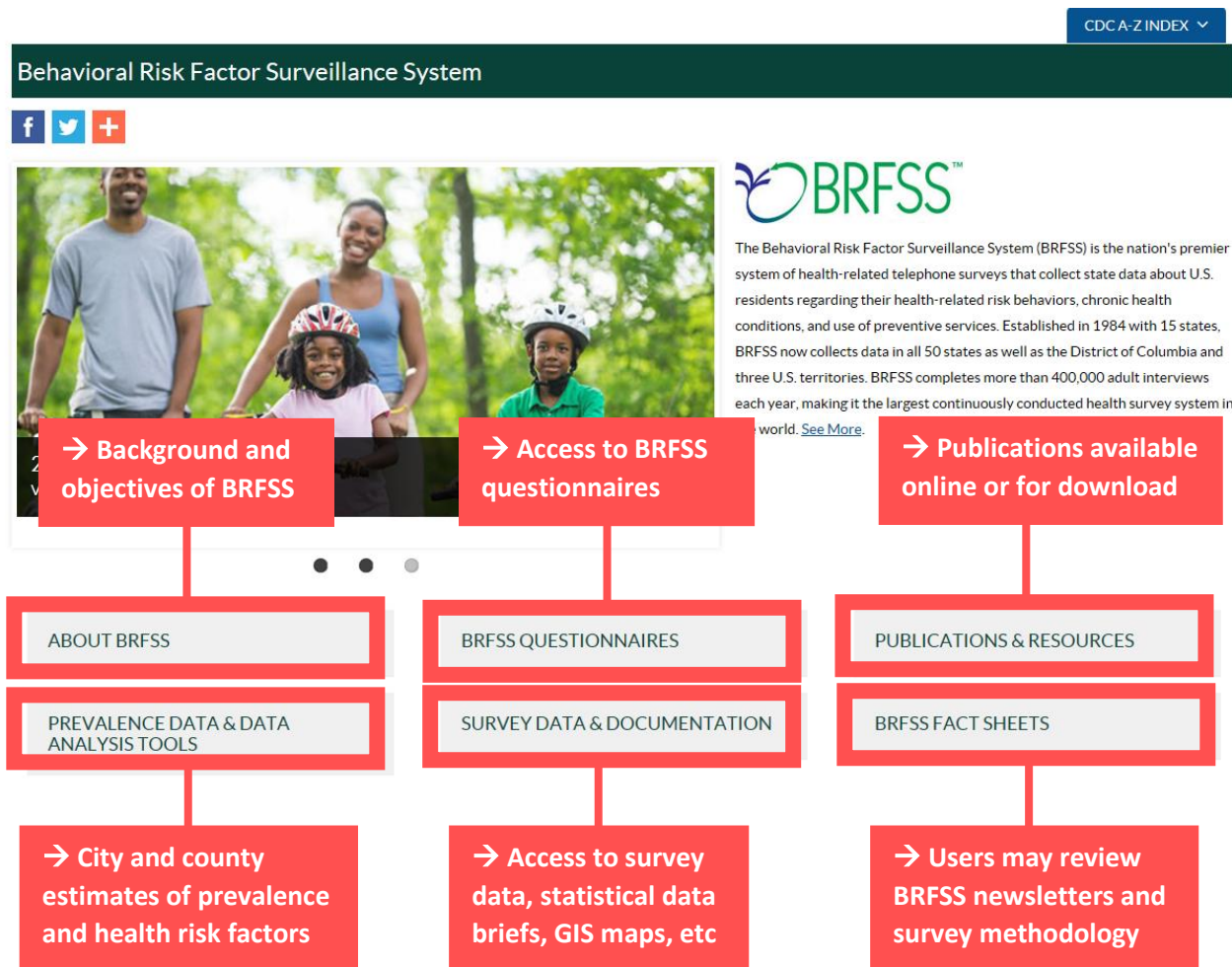


Getting Started Guide – Behavioral Risk Factor Surveillance System (BRFSS)

➤ Home page access



➤ Prevalence Data & Data Analysis Tools – overview of fields

Prevalence Data & Data Analysis Tools



Find city and county data collected through the Selected Metropolitan/Micropolitan Area Risk Trends (SMART) project, the Web Enabled Analysis Tool (WEAT), interactive maps, and other resources provided through BRFSS.

→ Local prevalence estimates (i.e. by counties)

→ Users may access data on trends and prevalence

PREVALENCE AND TRENDS DATA

Using the Prevalence and Trends Data Tools, users may produce charts for individual states or the nation by health topic. Users may select specific years or request multiple year data. The Prevalence and Trend Data Tools will produce line graphs for multiple years and bar charts for single years for each selected indicator.

SMART: CITY AND COUNTY DATA

Selected Metropolitan/Micropolitan Area Risk Trends (SMART) is an ongoing project that uses BRFSS data to produce some local area estimates. Counties and Metropolitan/Micropolitan Areas (MMSAs) were selected for SMART if there were 500 or more respondents BRFSS combined landline and cell phone data for any year.

→ Health indicators cross-tabulation tables

WEB ENABLED ANALYSIS TOOL (WEAT) - TOOL CURRENTLY UNAVAILABLE.

The Web Enables Analysis Tool (WEAT) permits users to create custom crosstabulation tables for health indicators within selected states. Up to two control variables may be included to create crosstab tables within each category of control variables. WEAT also may be used to create logistic equations using BRFSS data. Users are promoted to make selections of year, state and variables to be included in the analyses.

CHRONIC DISEASE INDICATORS (CDI)

The Chronic Disease Indicators Tool allows users to select two or more geographic areas such as states, Metropolitan/Micropolitan Areas (MMSAs), or regions within states. The tool then creates a table illustrating differences on user selected health indicators by geographic area. Chronic conditions and health risk behaviors may be selected for inclusion in customized tables.

→ Access prevalence estimates based on geography

MMWR SURVEILLANCE BY YEAR

Each year the BRFSS publishes prevalence estimates in the Morbidity and Mortality Weekly Report (MMWR) for multiple indicators by state and some sub-state areas. The prevalence estimates are presented in comparison tables for each geographic area included in SMART BRFSS as well as for each state individually.

→ Depict comparisons based on selected geographies

➤ Prevalence Data & Data Analysis Tools – example

→ In this example, we want to examine the prevalence of cardiovascular disease by state

PREVALENCE AND TRENDS DATA

Using the Prevalence and Trends Data Tools, users may produce charts for individual states or the nation by health topic. Users may select specific years or request multiple year data. The Prevalence and Trend Data Tools will produce line graphs for multiple years and bar charts for single years for each selected indicator.

WEB ENABLED ANALYSIS TOOL (WEAT) - TOOL CURRENTLY UNAVAILABLE.

The Web Enables Analysis Tool (WEAT) permits users to create custom crosstabulation tables for health indicators within selected states. Up to two control variables may be included to create crosstab tables within each category of control variables. WEAT also may be used to create logistic equations using BRFSS data. Users are promoted to make selections of year, state and variables to be included in the analyses.

SMART: CITY AND COUNTY DATA

Selected Metropolitan/Micropolitan Area Risk Trends (SMART) is an ongoing project that uses BRFSS data to produce some local area estimates. Counties and Metropolitan/Micropolitan Areas (MMSAs) were selected for SMART if there were 500 or more respondents BRFSS combined landline and cell phone data for any year.

CHRONIC DISEASE INDICATORS (CDI)

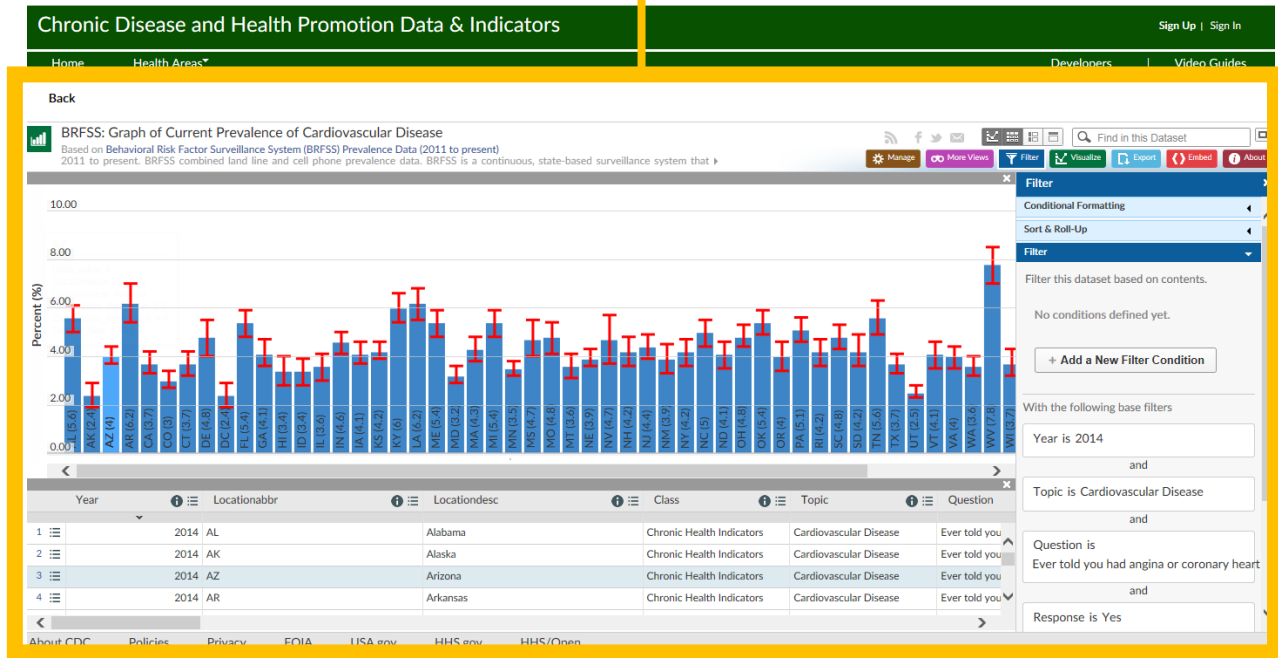
The Chronic Disease Indicators Tool allows users to select two or more geographic areas such as states, Metropolitan/Micropolitan Areas (MMSAs), or regions within states. The tool then creates a table illustrating differences on user selected health indicators by geographic area. Chronic conditions and health risk behaviors may be selected for inclusion in customized tables.

The screenshot shows the Behavioral Risk Factors Data Portal interface. At the top, a search bar contains the text "cardiovascular disease". Below the search bar, the page title reads "Welcome to the Behavioral Risk Factors Data Portal". The main content area is titled "Featured Content" and includes several cards. The first card is "BRFSS Prevalence & Trends Interactive Application" with a bar chart showing prevalence data. The second card is "Behavioral Risk Factor Surveillance System (BRFSS) Prevalence Data" with a date of July 9, 2018. The third card is "2011 to present. BRFSS SMART MMSA Prevalence combined land line and cell phone data." A yellow callout box points to the search bar with the text: "→ Type in query in search bar and access various datasets on cardiovascular disease prevalence estimates". On the left side, there is a "Categories" sidebar with various health topics listed, including "500 Cities", "Alcohol-Related Disease Impact", "Behavioral Risk Factors", "Chronic Disease Indicators", "Health-Related Quality of Life", "Healthy Aging", "Heart Disease & Stroke Prevention", "Maternal & Child Health", "Nutrition, Physical Activity, and Obesity", and "Oral Health". At the bottom, it shows "37 Results filtered by Categories > Behavioral Risk Factors" and a "Sort by Most Relevant" dropdown menu.

➤ Prevalence Data & Data Analysis Tools – example output

➔ Interactive chart with estimates by state

 Centers for Disease Control and Prevention
CDC 24/7. Saving Lives. Protecting People.™



➤ BRFSS Questionnaires – overview of fields

About BRFSS	+
Prevalence Data and Data Analysis Tools	
Survey Data and Documentation	+
Questionnaires	
Publications and Resources	+
State Information	+
Fact Sheets	

BRFSS Questionnaires



The BRFSS questionnaire is designed by a working group of BRFSS state coordinators and CDC staff. The questionnaire is approved by all state coordinators.

Currently, the questionnaire has three parts: 1) the core component, consisting of the fixed core, rotating core, and emerging core, 2) optional modules, and 3) state-added questions.

All health departments must ask the core component questions without modification in wording, however, the modules are optional.


The fixed core is a standard set of questions asked by all states that includes questions on demographic characteristics, plus queries on current health behaviors, such as tobacco use and seatbelt use. The rotating core is made up of two distinct sets of questions, each asked in alternating years by all states, addressing different topics. In the years that rotating core topics are not used, they are supported as optional modules. The emerging core is a set of up to five questions that are added to the fixed and rotating cores. Emerging core questions typically focus on "late breaking" issues. These questions are part of the core for one year and are evaluated during, or soon after the year concludes to determine their potential value in future surveys.

Please Select the Options Below

- > Questionnaires by Year (English Version)
- > Questionnaires by Year (Spanish Version)
- > Optional Data Module by States
- > Optional Data Module by Category
- > Search the Historical Questions Database
- > Suggested Citation Styles

➔ Access questionnaires based on year, state, or category



➔ Available in English and Spanish

 **Get Email Updates**

To receive email updates about this page, enter your email address:

What's this?

Related Links

Health Indicator Sortable Stats
Health Indicators Warehouse (HIW) 
HealthData.gov 
Data Catalog

➤ BRFSS Questionnaires – example

About BRFSS +

Prevalence Data and Data Analysis Tools

Survey Data and Documentation +

Questionnaires

Publications and Resources +

State Information +

Fact Sheets

BRFSS Questionnaires

[f](#) [t](#) [+](#)

The BRFSS questionnaire is designed by a working group of BRFSS state coordinators and CDC staff. The questionnaire is approved by all state coordinators.

Currently, the questionnaire has three parts: 1) the core component, consisting of the fixed core, rotating core, and emerging core, 2) optional modules, and 3) state-added questions.

All health departments must ask the core component questions without modification in wording, however, the modules are optional.

The fixed core is a standard set of questions asked by all states that includes questions on demographic characteristics, plus queries on current health behaviors, such as tobacco use and seatbelt use. The rotating core is made up of two distinct sets of questions, each asked in alternating years by all states, addressing different topics. In the years that rotating core topics are not used, they are supported as optional modules. The emerging core is a set of up to five questions that are added to the fixed and rotating cores. Emerging core questions typically focus on "late breaking" issues. These questions are part of the core for one year and are evaluated during, or soon after the year concludes to determine their potential value in future surveys.

Get Email Updates

To receive email updates about this page, enter your email address:

What's this? **Submit**

Related Links

[Health Indicator Sortable Stats](#)

[Health Indicators Warehouse \(HIW\)](#) [↗](#)

[HealthData.gov](#) [↗](#)

[Data Catalog](#)

Please Select the Options Below

- > **Questionnaires by Year (English Version)**
- > Questionnaires by Year (Spanish Version)
- > Optional Data Module by States
- > Optional Data Module by Category
- > Search the Historical Questions Database
- > Suggested Citation Styles

Please Select the Options Below

- ▼ **Questionnaires by Year (English Version)**
 - **2016 Survey Questions** [↗](#) [PDF - 518 KB]
 - [2014 Survey Questions](#) [↗](#) [PDF - 323 KB]
 - [2013 Survey Questions](#) [↗](#) [PDF - 354 KB]
 - [2012 Survey Questions](#) [↗](#) [PDF - 328 KB]
 - [2011 Survey Questions](#) [↗](#) [PDF - 672 KB]
 - [2010 Survey Questions](#) [↗](#) [PDF - 378 KB]
 - [2009 Survey Questions](#) [↗](#) [PDF - 1 MB]
 - [2008 Survey Questions](#) [↗](#) [PDF - 383 KB]
 - [2007 Survey Questions](#) [↗](#) [PDF - 363 KB]
 - [2006 Survey Questions](#) [↗](#) [PDF - 391 KB]
 - [2005 Survey Questions](#) [↗](#) [PDF - 422 KB]
 - [2004 Survey Questions](#) [↗](#) [PDF - 389 KB]
 - [2003 Survey Questions](#) [↗](#) [PDF - 2 MB]
 - [2002 Survey Questions](#) [↗](#) [PDF - 198 KB]
 - [2001 Survey Questions](#) [↗](#) [PDF - 167 KB]
 - [2000 Survey Questions](#) [↗](#) [PDF - 167 KB]
 - [1999 Survey Questions](#) [↗](#) [PDF - 289 KB]
 - [1998 Survey Questions](#) [↗](#) [PDF - 307 KB]
 - [1997 Survey Questions](#) [↗](#) [PDF - 279 KB]
 - [1996 Survey Questions](#) [↗](#) [PDF - 217 KB]
 - [1995 Survey Questions](#) [↗](#) [PDF - 206 KB]
 - [1994 Survey Questions](#) [↗](#) [PDF - 156 KB]

→ In this example, we want to look at BRFSS questionnaires for 2016

→ PDF output of BRFSS questionnaire in 2016

➤ **BRFSS Questionnaires – example output**

Behavioral Risk Factor Surveillance System 2016 Questionnaire

Table of Contents

Table of Contents	2
Interviewer's Script	3
Landline	3
Cell Phone	7
Core Sections	10
Section 1: Health Status	10
Section 2: Healthy Days — Health-Related Quality of Life	10
Section 3: Health Care Access	11
Section 4: Exercise	12
Section 5: Inadequate Sleep	13
Section 6: Chronic Health Conditions	13
Section 7: Oral Health	16
Section 8: Demographics	16
Section 9: Tobacco Use	24
Section 10: E-Cigarettes	26
Section 11: Alcohol Consumption	26
Section 12: Immunization	27
Section 13: Falls	28
Section 14: Seatbelt Use	29
Section 15: Drinking and Driving	29

➤ **Survey Data & Documentation – overview of fields**

→ Final data sets

2017 SURVEY DATA AND DOCUMENTATION
Find data sets and support documents needed to conduct analyses

SMART: CITY & COUNTY SURVEY DATA & DOCUMENTATION
Access the survey data and documentation for any SMART BRFSS survey year

→ City and county survey data

→ Asthma survey

ASTHMA CALL-BACK SURVEY
The Asthma Call-back Survey (ACBS) is an in-depth asthma survey developed and funded by the Air Pollution and Respiratory Health Branch (APRHB) in the National Center for Environmental Health (NCEH)

ANNUAL SURVEY DATA
Access the survey data and documentation for any BRFSS survey year

→ Annual survey data

→ BRFSS data briefs

BRFSS STATISTICAL BRIEFS
Refer to these guides for help with conducting an analysis on several different topics

GIS MAPS DATA & DOCUMENTATION
Download the BRFSS GIS Maps data for analysis. These files are available in Zip Archive File (ZIP) format

→ Zip files for GIS

➤ Survey Data & Documentation – example

→ In this example, we want to access and download GIS files

2017 SURVEY DATA AND DOCUMENTATION

Find data sets and support documents needed to conduct analyses

ASTHMA CALL-BACK SURVEY

The Asthma Call-back Survey (ACBS) is an in-depth asthma survey developed and funded by the Air Pollution and Respiratory Health Branch (APRHB) in the National Center for Environmental Health (NCEH)

BRFSS STATISTICAL BRIEFS

Refer to these guides for help with conducting an analysis on several different topics

SMART: CITY & COUNTY SURVEY DATA & DOCUMENTATION

Access the survey data and documentation for any SMART BRFSS survey year

ANNUAL SURVEY DATA

Access the survey data and documentation for any BRFSS survey year

GIS MAPS DATA & DOCUMENTATION

Download the BRFSS GIS Maps data for analysis. These files are available in Zip Archive File (ZIP) format

➤ Survey Data & Documentation – example output

GIS Data and Documentation



Click the links below to download the BRFSS GIS Maps data for analysis. These files contain data and documentation, and are available in Zip Archive File (ZIP) format. The zip format contains one or more files within it and is compressed to minimize the file's size. Use any zip utility to unzip these archives.

The zip files contain BRFSS data that is mapped for both the states and metropolitan/micropolitan statistical areas (MMSAs). In these data sets, the BRFSS data has been attached to shapefiles which can be viewed using different desktop GIS applications, for example, ArcGIS from ESRI. You can open the shapefiles in a desktop GIS application and generate your own maps using this data.

For more information on BRFSS Interactive Maps (GIS), see the [BRFSS GIS FAQs](#).

[2010 BRFSS GIS Data](#) [ZIP - 296 KB]
BRFSS/SMART GIS shapefile, data, and documentation for 2010

[2009 BRFSS GIS Data](#) [ZIP - 289 KB]
BRFSS/SMART GIS shapefile, data, and documentation for 2009

[2008 BRFSS GIS Data](#) [ZIP - 328 KB]
BRFSS/SMART GIS shapefile, data, and documentation for 2008

[2007 BRFSS GIS Data](#) [ZIP - 254 KB]
BRFSS/SMART GIS shapefile, data, and documentation for 2007

[2006 BRFSS GIS Data](#) [ZIP - 127 KB]
BRFSS/SMART GIS shapefile, data, and documentation for 2006

[2005 BRFSS GIS Data](#) [ZIP - 2 MB]
BRFSS/SMART GIS shapefile, data, and documentation for 2005

[2004 BRFSS GIS Data](#) [ZIP - 2 MB]
BRFSS/SMART GIS shapefile, data, and documentation for 2004

→ Links to GIS zip files available for download by year

➤ Publications and Resources – overview of fields

Publications & Resources



MMWR Surveillance Summaries



The CDC's Morbidity and Mortality Weekly Report (MMWR) contains hundreds of articles citing BRFSS data. The MMWR Web site provides the complete articles in a searchable database. DBS provided leadership in developing the CDC report Mental Illness Surveillance Among Adults in the United States, released on September 2, 2011, as a supplement to the Morbidity and Mortality Weekly Report.

→ Details on validity and reliability of BRFSS

→ Bibliography on methods and limitations of self-reported data

BRFSS DATA QUALITY, VALIDITY, AND RELIABILITY

Information on analyses of BRFSS validity and reliability, including assessing the use of BRFSS for producing national estimates.

METHODS, VALIDITY, AND RELIABILITY BIBLIOGRAPHY

Bibliography of articles related to methodologic issues and the validity/reliability of self-reported data, including BRFSS.

More

➤ Publications and Resources – example

Publications & Resources



MMWR Surveillance Summaries



The CDC's Morbidity and Mortality Weekly Report (MMWR) contains hundreds of articles citing BRFSS data. The MMWR Web site provides the complete articles in a searchable database. DBS provided leadership in developing the CDC report Mental Illness Surveillance Among Adults in the United States, released on September 2, 2011, as a supplement to the Morbidity and Mortality Weekly Report.

→ In this example, we want to find publications that assess the validity and reliability of BRFSS

BRFSS DATA QUALITY, VALIDITY, AND RELIABILITY

Information on analyses of BRFSS validity and reliability, including assessing the use of BRFSS for producing national estimates.

METHODS, VALIDITY, AND RELIABILITY BIBLIOGRAPHY

Bibliography of articles related to methodologic issues and the validity/reliability of self-reported data, including BRFSS.

More

BRFSS Data Quality, Validity, and Reliability



BRFSS Data Quality and National Estimates

There have been numerous studies that have examined issues related to the reliability and validity of the BRFSS and the system's ability to provide both valid national estimates, within state estimates and comparisons across states ([see bibliography](#)). While many of these studies look at particular topic areas, the annotated list of publications below provides information across topics and illustrates the future of the BRFSS as a reliable and valid source of information on health related issues:

1. **Pierannunzi C, Hu S, Balluz L. [BMC Medical Research Methodology](#) 2013, 13:49**

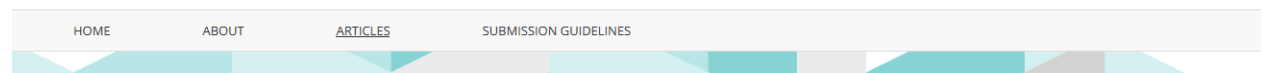
In order to assess the reliability and validity of prevalence estimates taken from the BRFSS, scholarship published from 2004–2011 dealing with tests of reliability and validity of BRFSS measures was compiled and presented by topics of health risk behavior. Assessments of the quality of each publication were undertaken using a categorical rubric. Higher rankings were achieved by authors who conducted reliability tests using repeated test/retest measures, or who conducted tests using multiple samples. A similar rubric was used to rank validity assessments. Validity tests which compared the BRFSS to physical measures were ranked higher than those comparing the BRFSS to other self-reported data. Literature which undertook more sophisticated statistical comparisons was also ranked higher. Overall findings indicated that BRFSS prevalence rates were comparable to other national surveys which rely on self-reports, although specific differences are noted for some categories of response. BRFSS prevalence rates were less similar to surveys which utilize physical measures in addition to self-reported data. There is very little research on reliability and validity for some health topics, but a great deal of information supporting the validity of the BRFSS data for others.

2. **Hu SS, Pierannunzi C, Balluz L. [Integrating a multimode design into a national random-digit-dialed telephone survey](#). *Prev Chronic Dis* 2011; 8 (6):A145.**

→ In this example, we read the synopsis and select this article

➤ Publications and Resources – example output

BMC Medical Research Methodology



RESEARCH ARTICLE | [OPEN ACCESS](#) | [OPEN PEER REVIEW](#)

A systematic review of publications assessing reliability and validity of the Behavioral Risk Factor Surveillance System (BRFSS), 2004–2011

Carol Pierannunzi , Shaohua Sean Hu and Lina Balluz

BMC Medical Research Methodology 2013 13:49 | DOI: 10.1186/1471-2288-13-49 | © Pierannunzi et al.; licensee BioMed Central Ltd. 2013

Received: 13 November 2012 | Accepted: 14 March 2013 | Published: 24 March 2013

 [Open Peer Review reports](#)

Abstract

Background

In recent years response rates on telephone surveys have been declining. Rates for the behavioral risk factor surveillance system (BRFSS) have also declined, prompting the use of new methods of weighting and the inclusion of cell phone sampling frames. A number of scholars and researchers have conducted studies of the reliability and validity of the BRFSS estimates in the context of these changes. As the BRFSS makes changes in its methods of sampling and weighting, a review of reliability and validity studies of the BRFSS is needed.

Download PDF

Export citations 

Table of Contents

[Abstract](#)
[Background](#)
[Methods](#)
[Results](#)
[Discussion](#)
[Conclusions](#)
[Declarations](#)
[References](#)

METRICS

Article accesses: 9186

Citations: 35 [more information](#)

Altmetric score: 1

→ After clicking the link, we are taken to the online publication