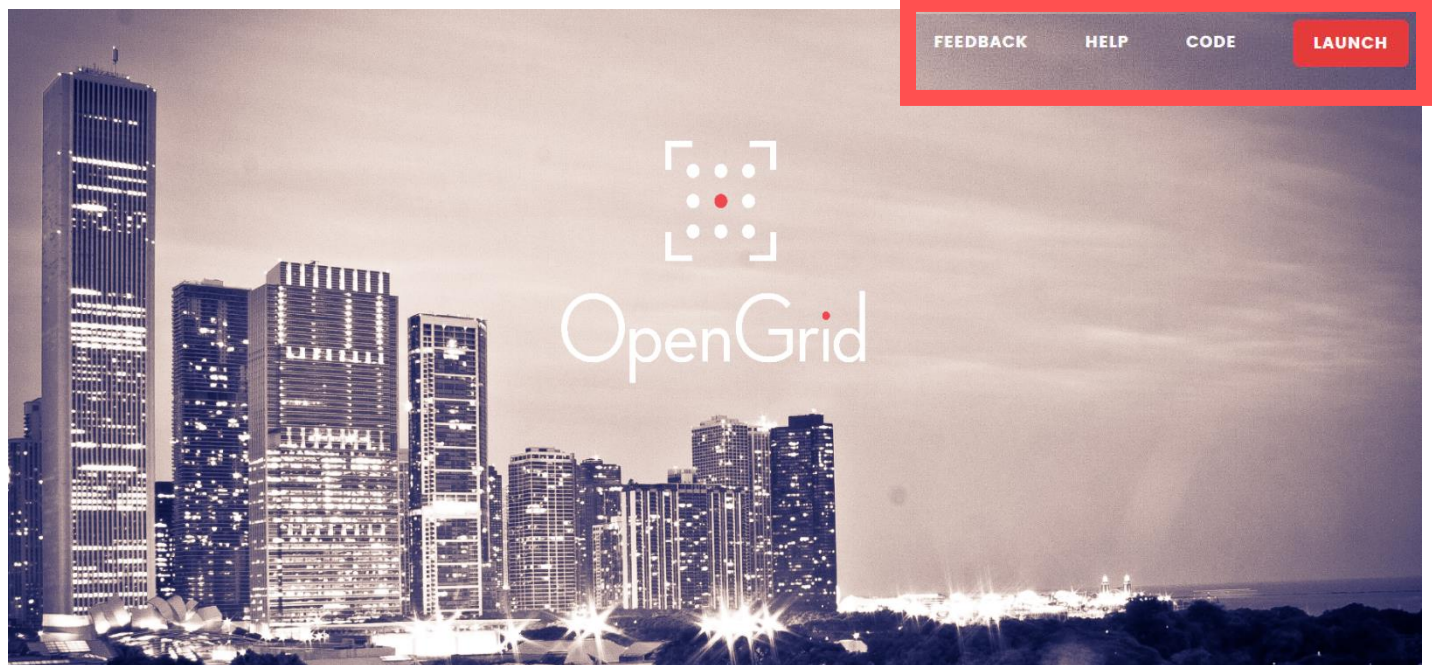


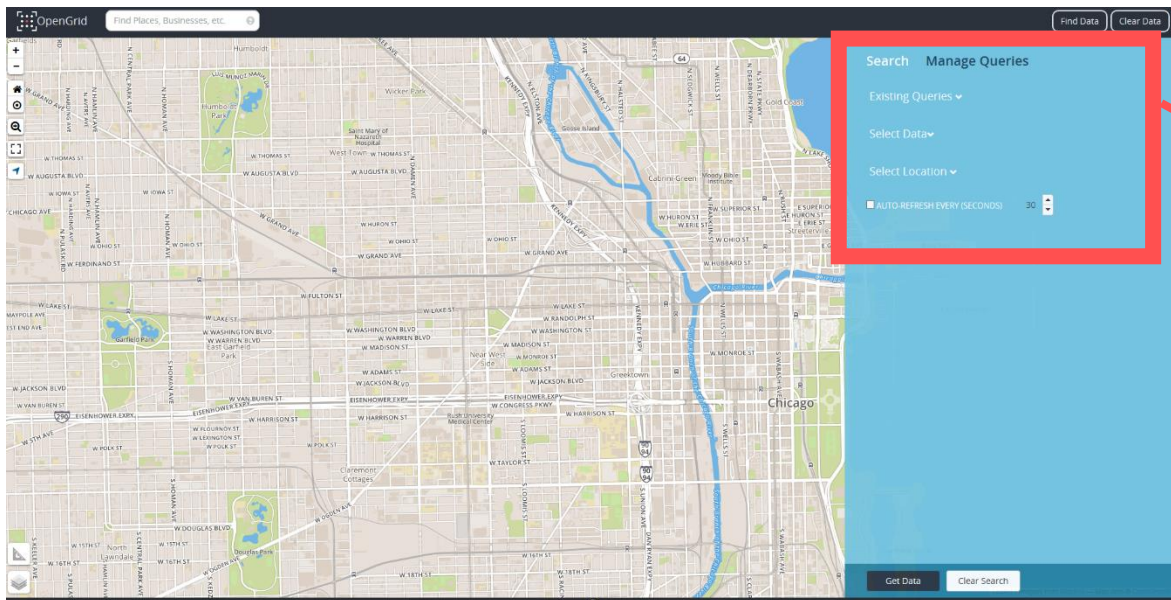
Getting Started Guide – OpenGrid

➤ Home page access

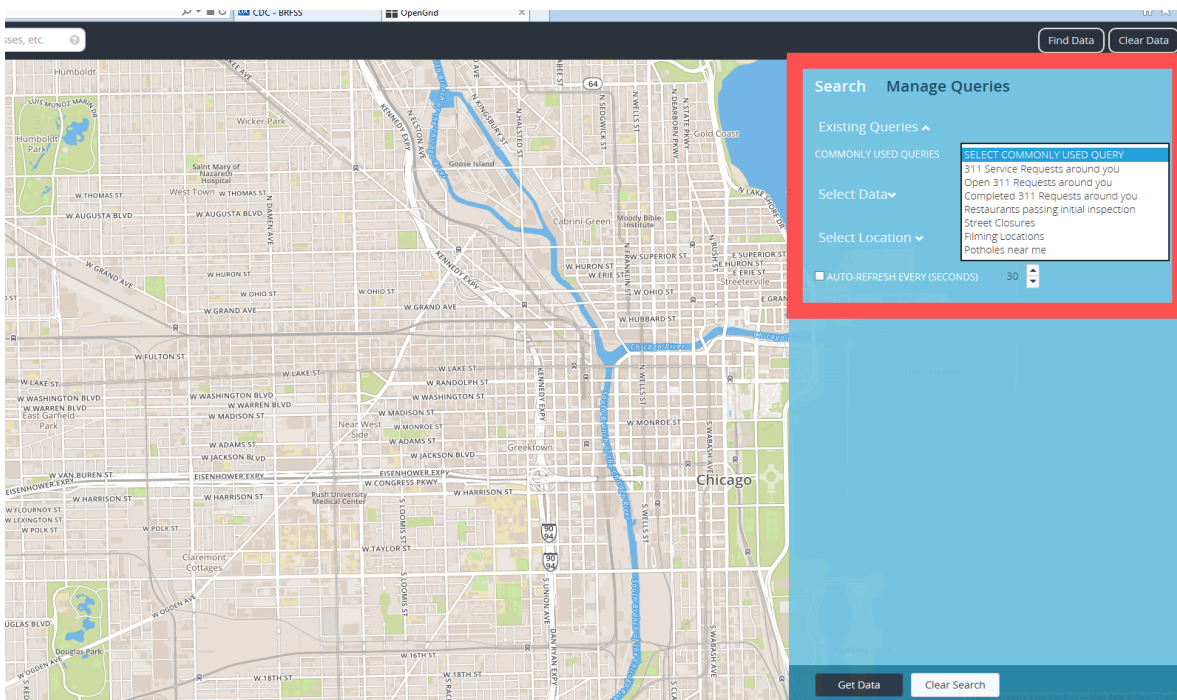
→ Click the 'Launch' tab in order to access search fields in OpenGrid



➤ Overview of fields



➔ Search fields include: existing queries, select data, and select location. There is also an auto-refresh option for users



➔ For 'Existing Queries' option, users can select from several topics including 311 service requests, restaurant inspection, street closures, potholes, etc

Find Data Clear Data

Search Manage Queries

Existing Queries ▾

Select Data ▲

Add dataset

- 311 Service Requests - Abandoned Vehicles
- 311 Service Requests - Alley Lights Out
- 311 Service Requests - Garbage Carts
- 311 Service Requests - Graffiti Removal
- 311 Service Requests - Pot Holes Reported
- 311 Service Requests - Rodent Baiting
- 311 Service Requests - Sanitation Code Complaints
- 311 Service Requests - Street Lights - All Out
- 311 Service Requests - Street Lights - One Out
- 311 Service Requests - Tree Debris
- 311 Service Requests - Tree Trims
- 311 Service Requests - Vacant and Abandoned Buildings Reported
- Building Permits
- Building Violations
- Business Licenses
- CDPH Environmental Permits
- CTA Average Ridership for Weekday in October 2012
- Crimes - 2001 to present
- Dwivy Trips
- Environmental Complaints
- Environmental Hold on City-Issued Permits
- Environmental Inspections

Get Data Clear Search

→ Under the 'Select Data' option, users can choose from a list of datasets provided

Find Data Clear Data

Search Manage Queries

Existing Queries ▾

Select Data ▲

Select Location ▲

- WITHIN SELECT BOUNDARY ▾
- NEAR SELECT POINT ▾

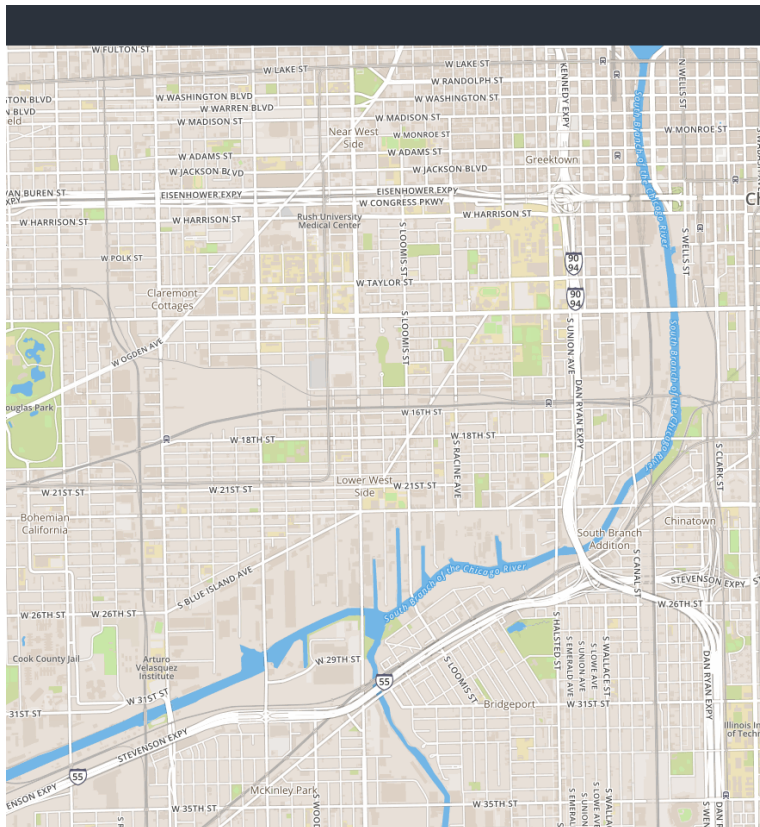
AUTO-REFRESH EVERY (SECONDS) 30

Get Data Clear Search

→ Under 'Select Location' option, boundaries can be set within a specified ward, zip code, or map extent. Users may also select an area near a point or marker

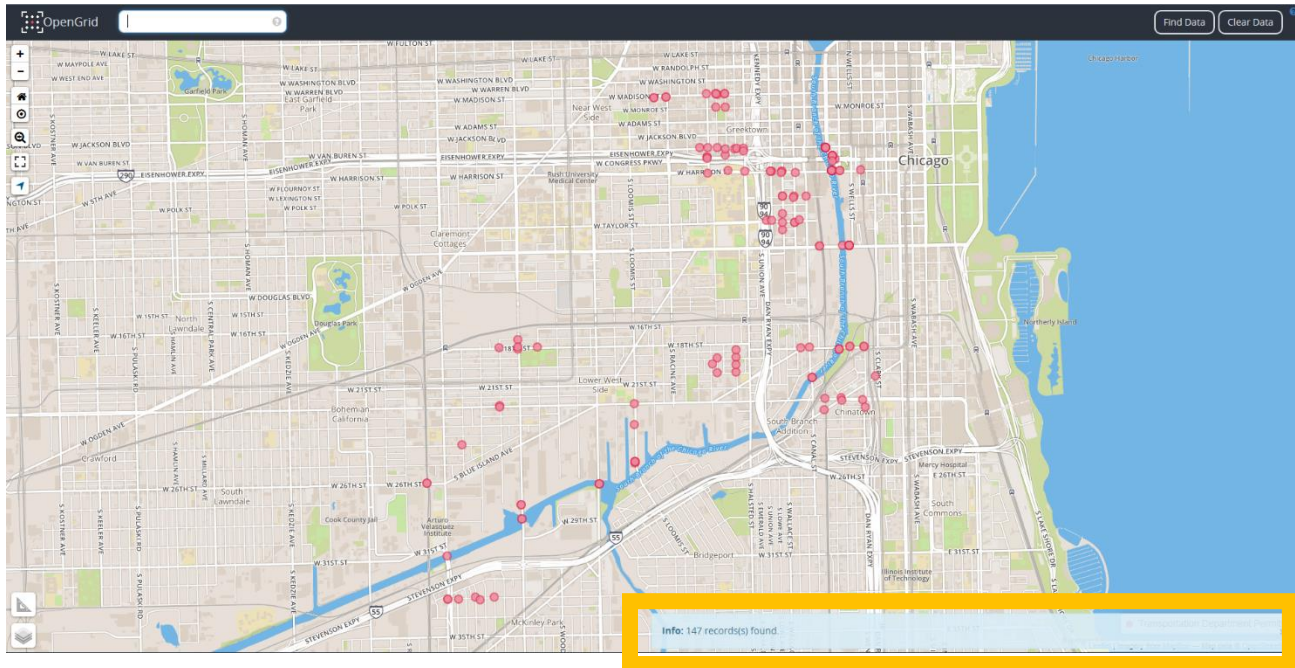
➤ Manage Queries – example

→ In this example, we want to look at street closures, with the Transportation Department dataset, in Ward 25 of the city. We also specified the color and opacity of the symbols used to depict the closures



A screenshot of the 'Manage Queries' interface. The interface is titled 'Search Manage Queries' and includes a 'Find Data' button and a 'Clear Data' button. Under 'Existing Queries', there is a dropdown menu for 'COMMONLY USED QUERIES' with 'Street Closures' selected. The 'Select Data' section shows 'Transportation Department Permits' as the selected dataset. A rule is defined with 'worktype' equal to 'StClosure'. The 'Color Options' section shows a red color swatch, a size of 6, and an opacity of 85. The 'Select Location' section has 'WITHIN Ward' selected with 'Ward 25' as the value. There is also an 'AUTO-REFRESH EVERY (SECONDS)' option set to 30. At the bottom, there are 'Get Data' and 'Clear Search' buttons.

➤ **Manage Queries – example output**



→ 147 records were found based on our query